

# ADDING A NEW ENGINE TYPE

**Overview** – As your engine testing needs grow, you can easily add a new engine type to your *WinPBS* system.

This application note explains how to add quickly a new engine type to your *WinPBS* system using a *Master Engine Library*, which should exist in your system. Several different libraries have been created by MTI Instruments, one exists for Air Force Engines, and others exist for different families of commercial engines. One or more of these libraries may have been loaded on your PBS-4100 system at the factory.

To load engine parameters from an engine library, follow these steps:

**STEP 1 – Select the IDENTIFY ENGINE function from the Main Menu** – After starting your PBS-4100 system, at Main Menu display, select the **IDENTIFY ENGINE** function by clicking on the button or pressing the F1 key.

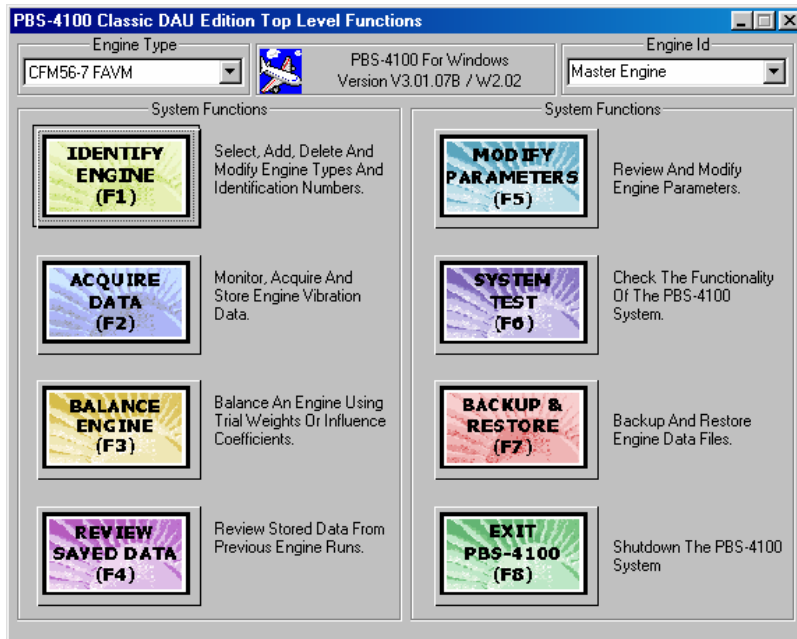
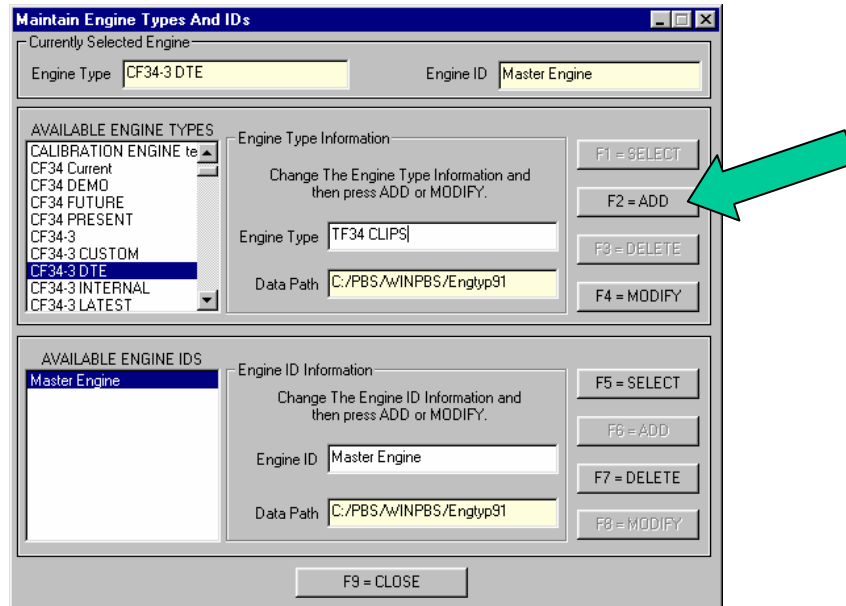


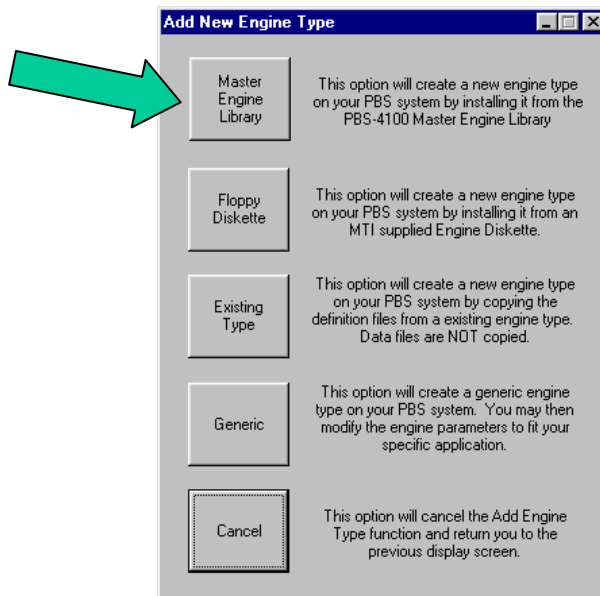
Figure 1 –Main Menu Display

**STEP 2 – ADDING A NEW ENGINE TYPE** – As illustrated in Figure 2, either click on the **F2=ADD** button or press the **F2** key to begin the process of selecting the new engine type.



**Figure 2 – Adding a new Engine Type**

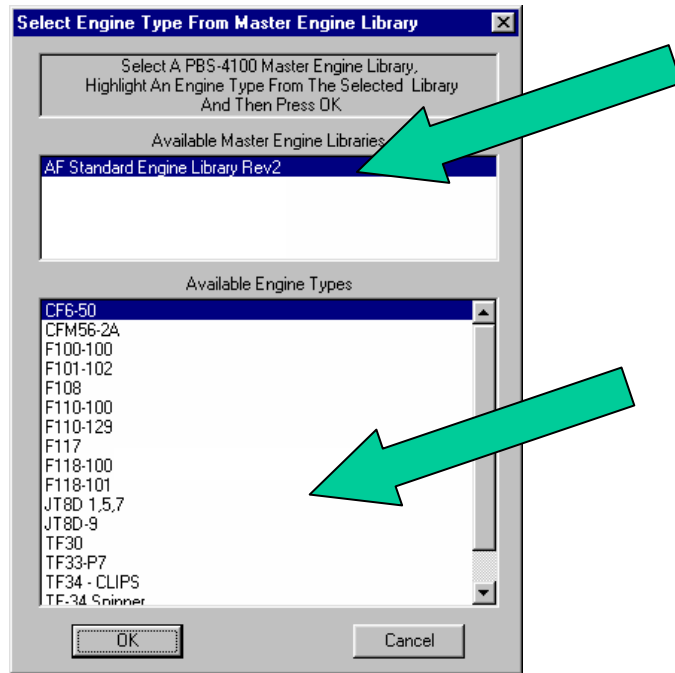
**STEP 3 – LOADING the new engine data** – After pressing the **F2=ADD** button, a new window will be displayed which asks for the source of the new engine data as illustrated in Figure 3. For adding a new engine using the MASTER ENGINE LIBRARY, use the pointing device to click on the **MASTER ENGINE LIBRARY** button.



**Figure 3 – Choose the data source for the New Engine Type**

**MTI Instruments Inc.**  
**325 Washington Avenue Extension**  
**Albany, NY 12205**

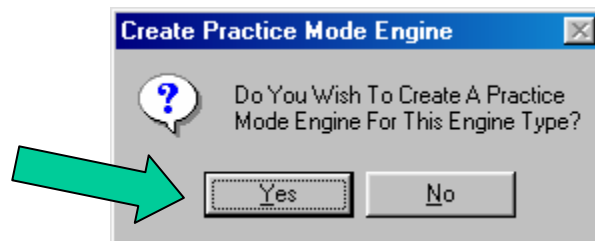
**STEP 4 – SELECTING the new engine data** – After pressing the **MASTER ENGINE LIBRARY** button, you will be asked to select the *Master Engine Library* which may be named standard or Air Force Library. After selecting the desired library, you should next select the desired engine from the list of engines presented in the lower area of the window. When the engine has been selected, click on the **OK** button.



**Figure 4 – Select Engine Type Window**

**STEP 5 – LOADING the new engine parameters** – During the process, you will also be asked if you would like to automatically create a PRACTICE engine as illustrated in Figure 5.

**ANSWER YES** to this question by clicking on the **YES** button.



**Figure 5 – Question about creating a Practice Engine**

**STEP 6 – Completing the process** – After answering the question, the PBS system will automatically set up your new engine parameters. At the conclusion of the process, you will be returned to the **MAINTAIN ENGINES** display.

Verify that the new engine type has been added to the list of **AVAILABLE ENGINE TYPES** as illustrated in Figure 6.

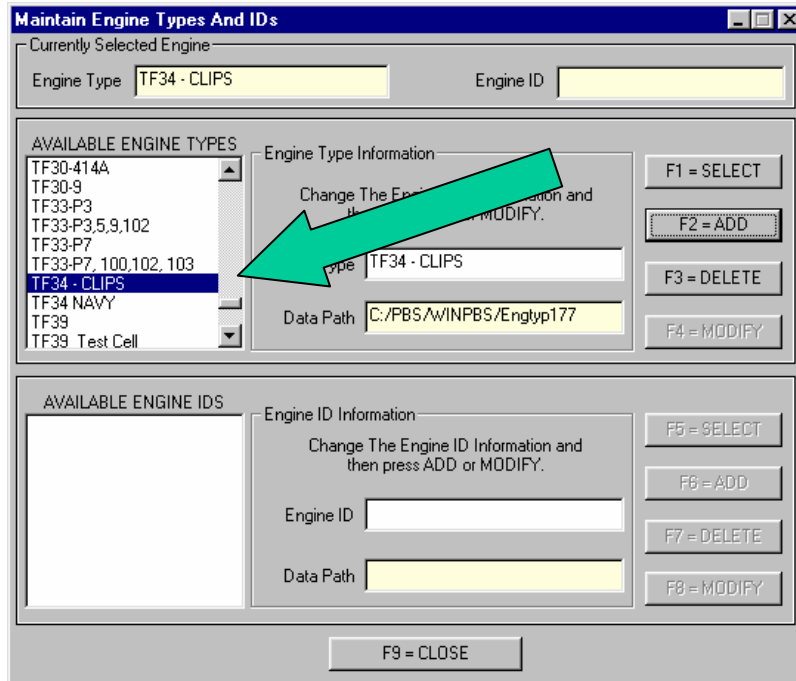


Figure 6 – Verifying that the Engine has been added to the system

**This completes the process of installing a new engine type.**

If you need more information or want to add engine types to your PBS-4100 system, contact MTI Instruments at:

Tel: 518-218-2550

Fax: 518-218-2506

[pbs@mtiinstruments.com](mailto:pbs@mtiinstruments.com)

**MTI Instruments Inc.**  
**325 Washington Avenue Extension**  
**Albany, NY 12205**