

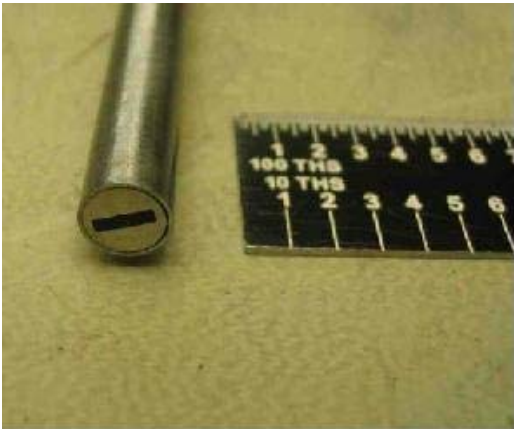
# RC-200 Reflectance-Compensated Fotonic Sensor

Standard Fotonic Sensor probes are influenced by the reflectivity of the target being measured. When viewing rotating or translating targets, the change in target reflectivity adds a measurement error onto the actual displacement reading.

MTI Instruments has developed a new fiber optic sensor, the RC-200 reflectivity-compensated probe, that automatically compensates for large changes in reflectivity of the measured target, and greatly minimizes the effect of target reflectivity changes. This unique design makes it possible to monitor targets over a dynamic reflectance range of 100:1, while maintaining high resolution, speed and accuracy. The probe consists of three integrated glass fiber bundles. One bundle transmits light while the other two receive light, with different response characteristics.

The probe module's electronics use the difference between the two receive bundles to compensate for reflectivity changes and provide a linear response proportional to probe gap. Unlike standard MTII reflectivity dependant probes, the RC-200 does not require calibration to the target being measured.

For existing users of the MTI-2000 or MTI-2100 Fotonic System we have great news! You can simply purchase the RC-200 probe module and use it with your controller, expanding its capabilities at a fraction of the cost for a new system.



**RC-200 PROBE**



**MTI-2100 FOTONIC SENSOR**

PRODUCT SPOTLIGHT